

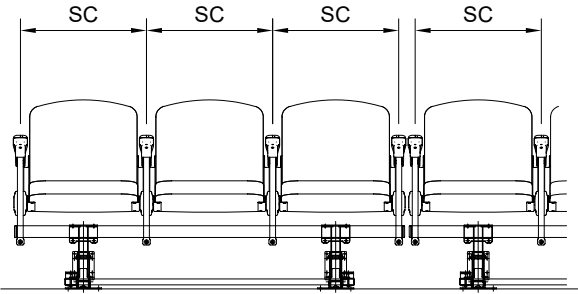
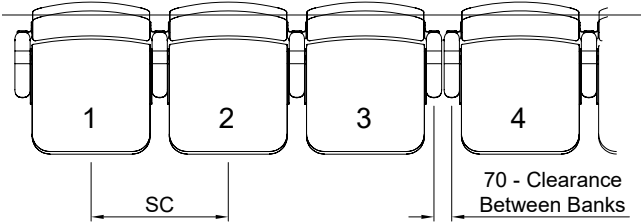
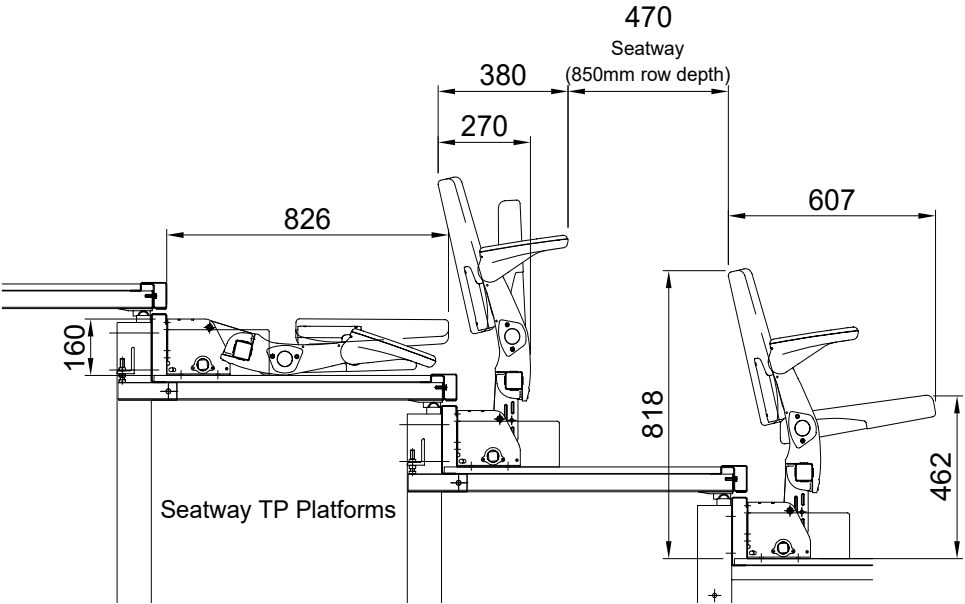
The Gallery 3 features a modern design with clean lines and exceptional detailing. The chair has been specifically developed for use with our TP retractable platforms due to the compact closed dimension. It can also be utilised on our Logix floor system and fitted on fixed tiers.



FEATURES

- Seat centres from 460-550mm
- Gas strut assists to aid the lowering/raising of seat frames. Semi-automatic available on request
- Designed for use on TP retractable platforms with a 260mm rise minimum
- Plastic, wood or upholstered arms
- Accessories include show wood panels, folding writing tablets and cupholders
- Upholstered in Camira Xtreme fabric as standard

* Dimensions assume fully upholstered chairs and to add
10mm to the row rise per seat or back panel.



	No Arms		Arms		Writing Tablets	
	Seatway	Maxam	Seatway	Maxam	Seatway	Maxam
Min Seat Centre (SC)	460mm	460mm	490mm	490mm	520mm	520mm
Min Row rise	260mm	244mm	260mm	244mm	320mm	295mm

Strength & Stability
The chair satisfies the requirements of
EN 12727:2000.

Fire Retardency
The fabric and foam comply with BS 5852:1990 (Source 0, 1,
and 5). Other codes or European Standards can be satisfied
as required.