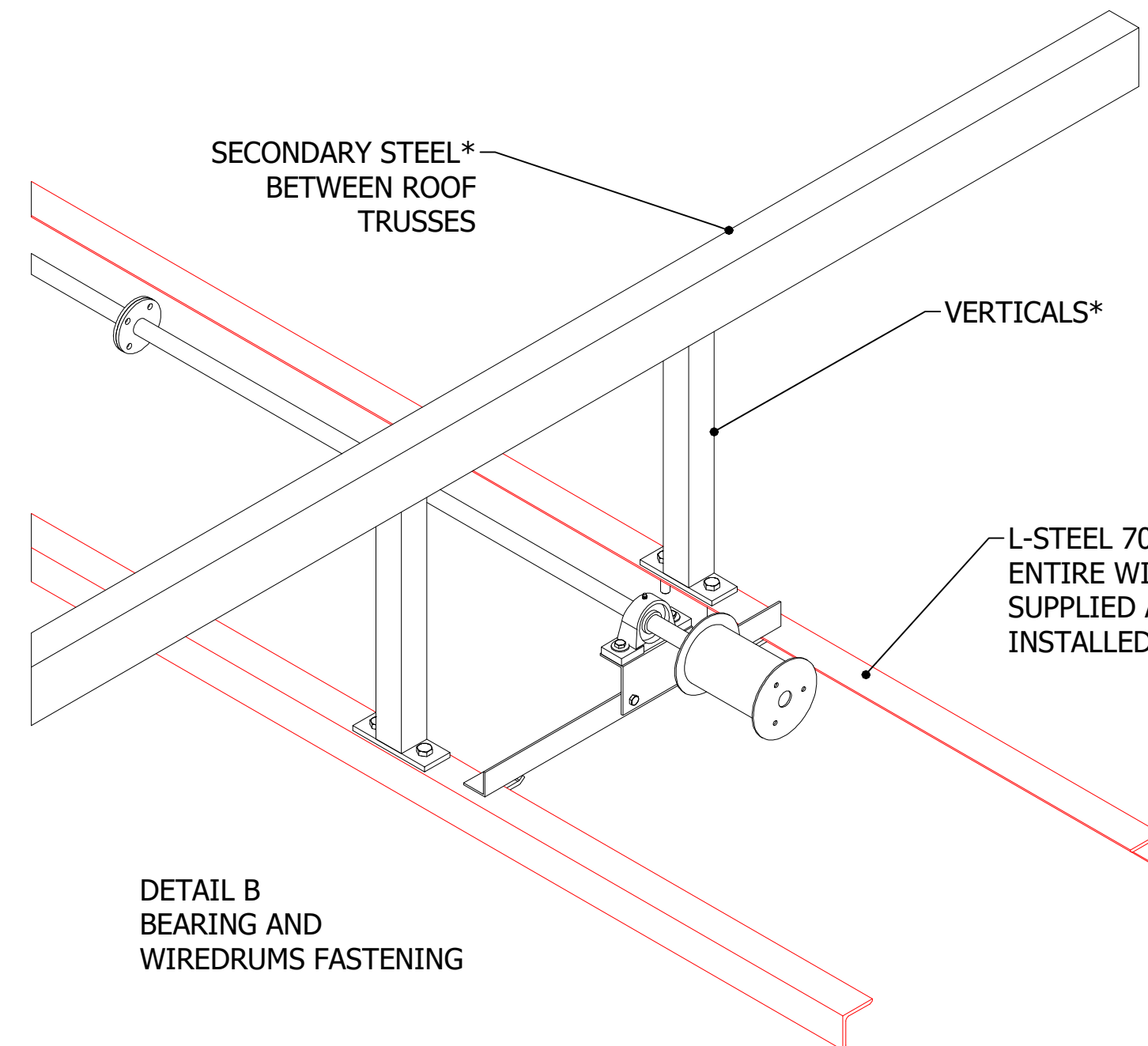
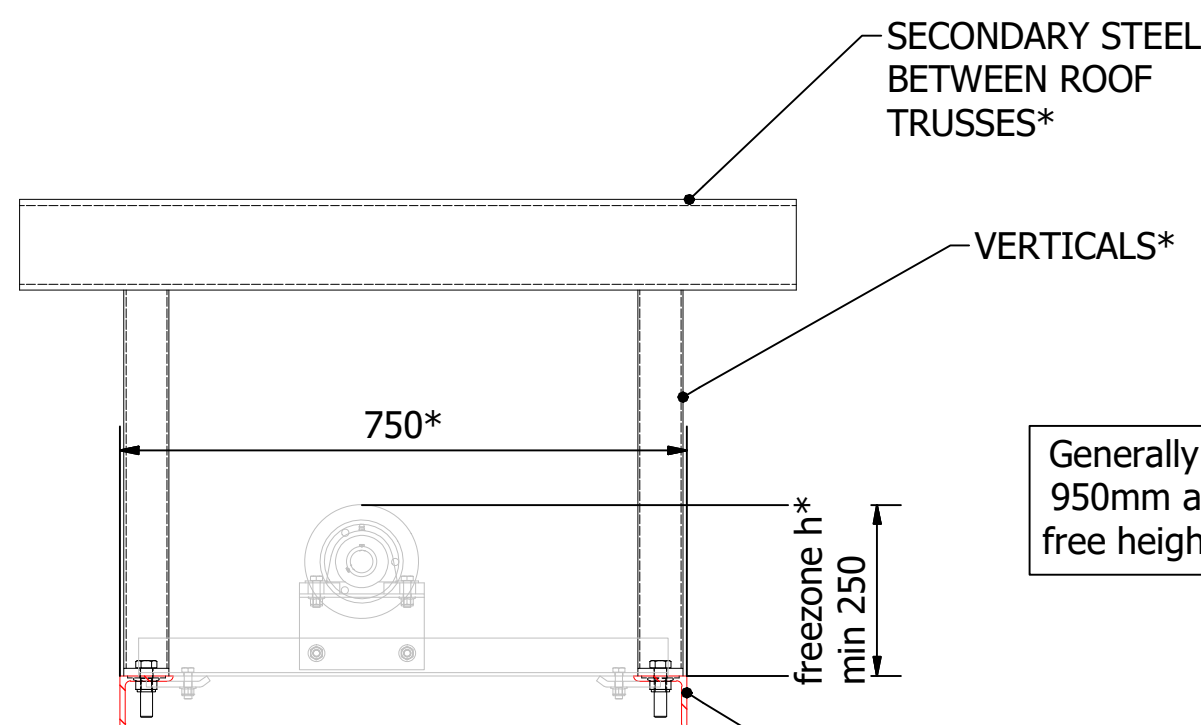


**DETAIL A**  
MOTOR FASTENING  
"Motor needs to be accessible for inspections and repairs. Hatches required"

L-STEEL 70x70x7\*  
ENTIRE WIDTH  
SUPPLIED AND  
INSTALLED BY OTHERS



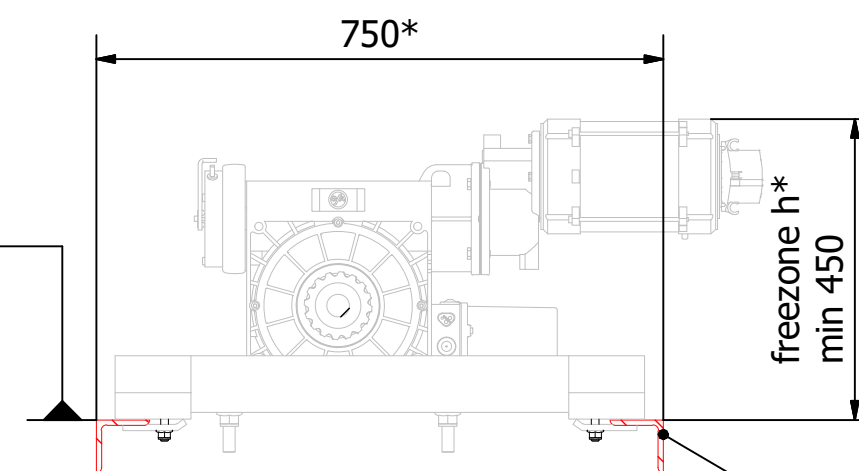
**DETAIL B**  
BEARING AND  
WIREDRUMS FASTENING



**SECTION C-C**

L-STEEL 70x70x7\*  
ENTIRE WIDTH  
SUPPLIED AND  
INSTALLED BY OTHERS

Generally to be installed  
950mm above required  
free height when hoisted



**SECTION D-D**

L-STEEL 70x70x7\*  
ENTIRE WIDTH  
SUPPLIED AND  
INSTALLED BY OTHERS

STRENGTH OF SUPPORTING STEEL  
TO BE CALCULATED BY OTHERS.  
MAX DEFLECTION 20mm/20m  
STANDARD DESIGN IS FEASIBLE FOR  
CURTAINS UP TO 9m IN HEIGHT.  
FOR OTHER DESIGNS AND HEIGHT  
PLEASE CONTACT SAXI FOR CONSULTATION

\*SUPPLIED AND INSTALLED BY OTHERS

GRANSKNINGSHANDLING			
 SAXI VÄGG AB Åkerivägen 3 S - 443 61 Stenkullen Tel: +46 (0) 302-22991 Fax: +46(0) 302-22419 www.saxi.se	Projekt		
	Supporting steel - standard		
	Typ		
	Saxi Teanik 2000/1000A		
Datum	ID	Nummer	Rev
	2019-10-29		
Status			